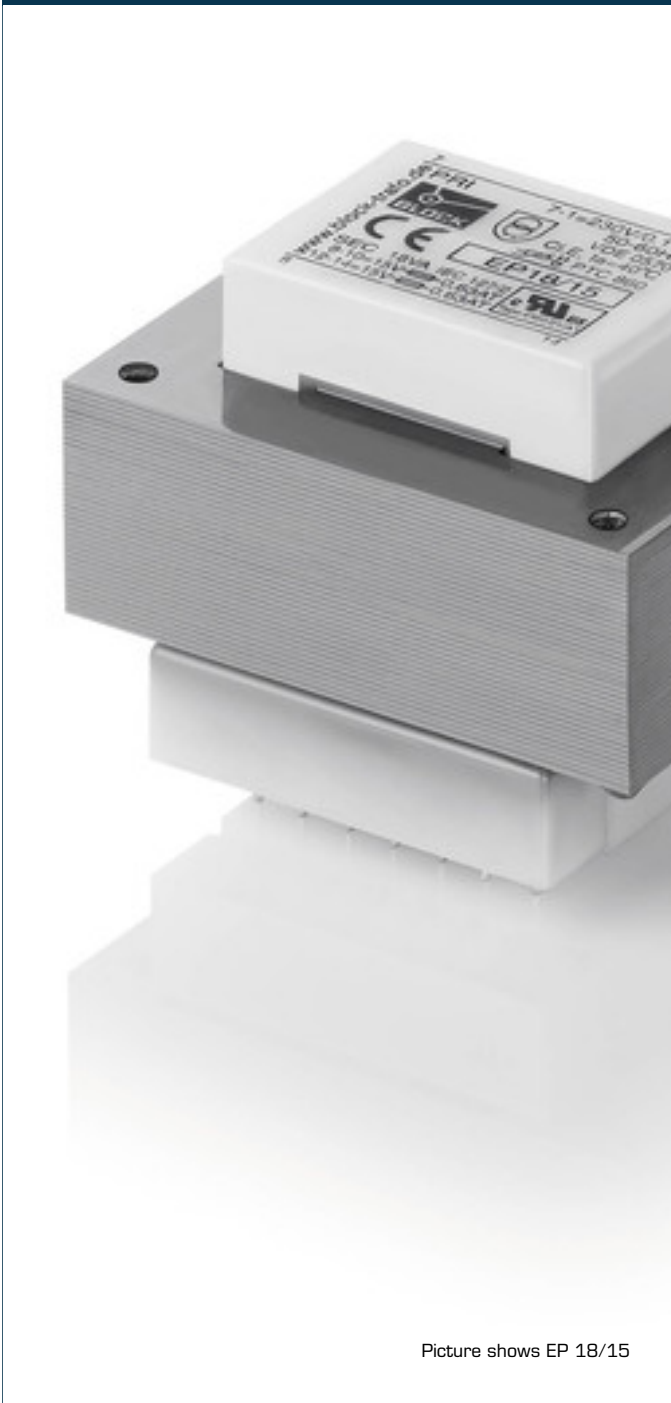


# Safety isolating transformer

## EP 28/15



Picture shows EP 18/15

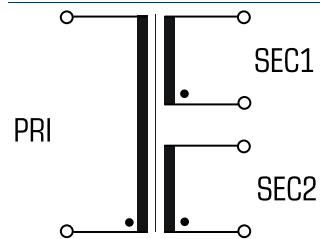
## Advantages

- Minimum size at high output
- Double output voltage for series or parallel connection
- Very good moisture protection and low noise due to vacuum impregnation
- Contact protected on the circuit board thanks to covered solder pin strips
- Stable connection technology with injected round wire soldering pins
- Additional mounting option with holes in the core

## Applications

Safety isolating transformer for the safe electrical isolation of the input and output sides. The transformer is suitable for creating SELV and PELV circuits because of the limit on the output voltage.

## Sample application



## Standards

Safety isolating transformer  
to: VDE 0570 Part 2-6, DIN EN 61558-2-6, EN 61558-2-6, IEC 61558-2-6

## Approvals





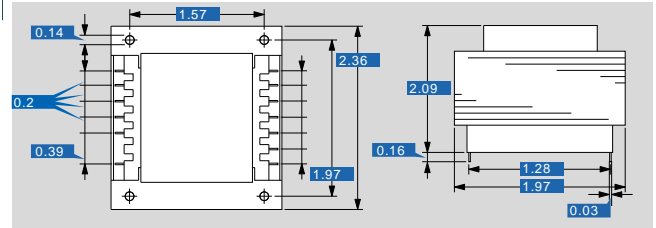
# Safety isolating transformer

## EP 28/15

Electrical data	
<b>Type</b>	
EP 28/15	
<b>Input</b>	
Rated input voltage	230 Vac
Rated frequency	50 - 60 Hz
<b>Output</b>	
Rated output voltage	2 x 15 Vac
Power	28 VA
No-load voltage (app. x factor)	1.16
No-load loss (typ.)	2.7 W
Efficiency	77 %
<b>Standards</b>	
Classification	Safety isolating transformer
<b>Environment</b>	
Ambient temperature max.	104.0 °F
<b>Safety and protection</b>	
Type	Open type
Insulation class	E
Protection index	IP 00
Safety class (prepared)	II
Short circuit strength	non-short-circuit proof
Overload protection	Typ PTC B50 (Accessory - available on request)
<b>Order numbers</b>	
<b>Order Number</b>	<b>EP 28/15</b>

Mechanical data	
<b>Type</b>	
EP 28/15	
<b>Terminal and mounting</b>	
Fixing method	Holes in the core package
Terminals	Pins for PCB
<b>Measures and weights</b>	
Core type	EI 60/30
Weight	1.46 lbs
Width	2.36 inch

### Dimensions in inch



Subject to change.