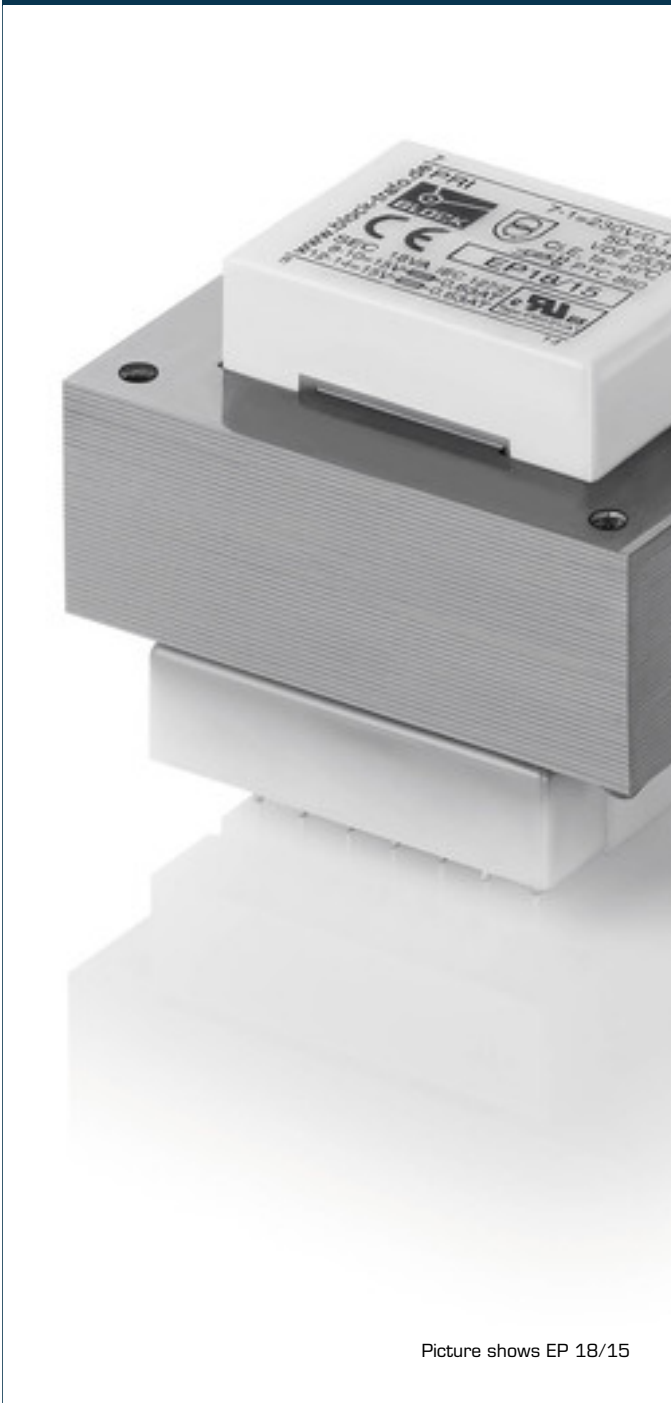


# Safety isolating transformer

## EP 4,5/12



Picture shows EP 18/15

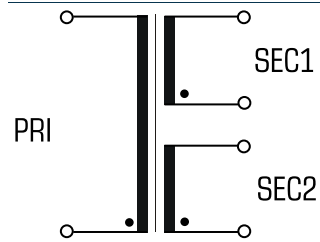
## Advantages

- Minimum size at high output
- Double output voltage for series or parallel connection
- Very good moisture protection and low noise due to vacuum impregnation
- Contact protected on the circuit board thanks to covered solder pin strips
- Stable connection technology with injected round wire soldering pins
- Additional mounting option with holes in the core

## Applications

Safety isolating transformer for the safe electrical isolation of the input and output sides. The transformer is suitable for creating SELV and PELV circuits because of the limit on the output voltage.

## Sample application



## Standards

Safety isolating transformer  
to: VDE 0570 Part 2-6, DIN EN 61558-2-6, EN 61558-2-6, IEC 61558-2-6

## Approvals





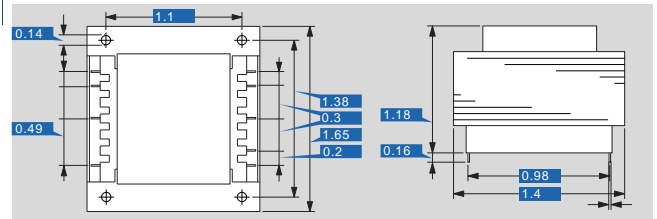
# Safety isolating transformer

## EP 4,5/12

Type		EP 4,5/12
<b>Electrical data</b>	Input	
	Rated input voltage	230 Vac
	Rated frequency	50 - 60 Hz
	Output	
	Rated output voltage	2 x 12 Vac
	Power	4.5 VA
	No-load voltage (app. x factor)	1.51
	No-load loss (typ.)	1.9 W
	Efficiency	56 %
	Standards	
	Classification	Safety isolating transformer
	Environment	
	Ambient temperature max.	104.0 °F
	Safety and protection	
	Type	Open type
Insulation class	E	
Protection index	IP 00	
Safety class (prepared)	II	
Short circuit strength	non-short-circuit proof	
Overload protection	Typ PTC 890 (Accessory - available on request)	
Order numbers		
<b>Order Number</b>	<b>EP 4,5/12</b>	

Type		EP 4,5/12
<b>Mechanical data</b>	Terminal and mounting	
	Fixing method	Holes in the core package
	Terminals	Pins for PCB
	Measures and weights	
	Core type	EI 42/14,8
	Weight	0.35 lbs
	Width	

### Dimensions in inch



Subject to change.