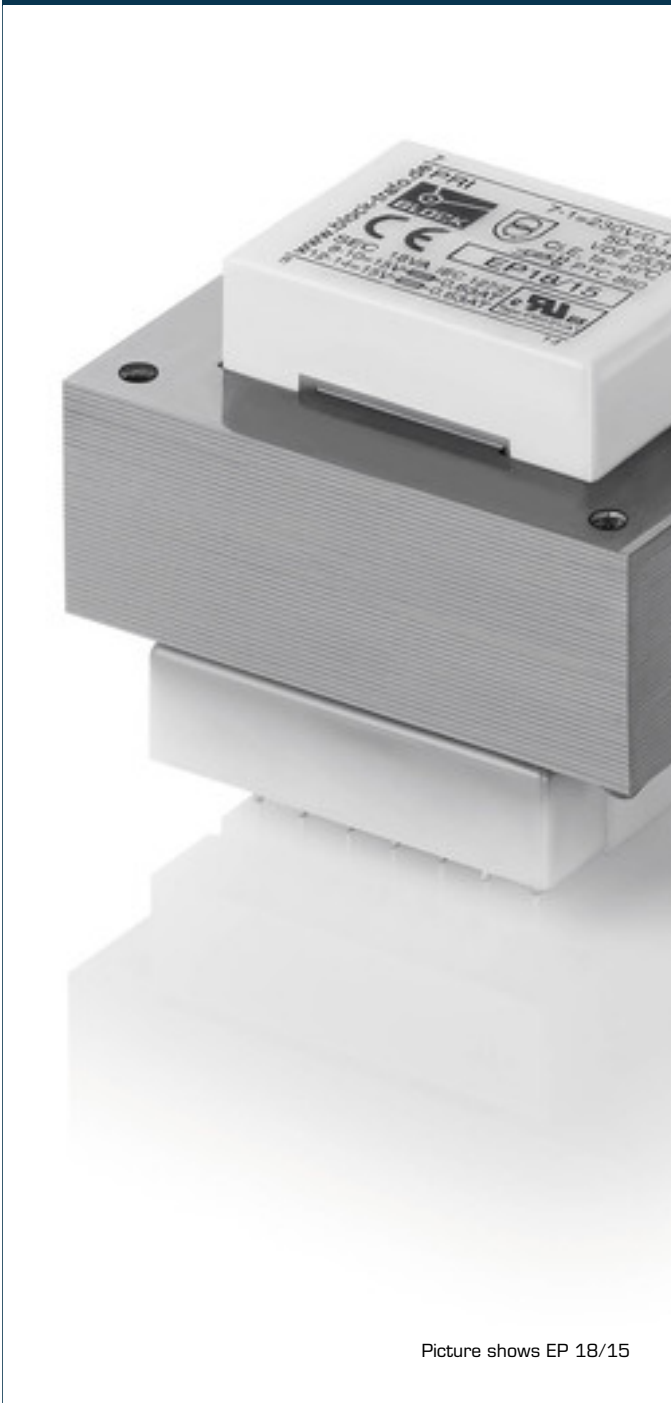


Safety isolating transformer

EP 4,5/15



Picture shows EP 18/15

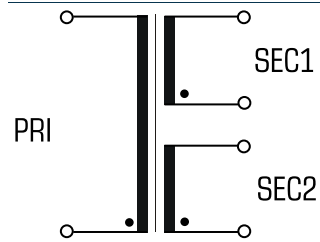
Advantages

- Minimum size at high output
- Double output voltage for series or parallel connection
- Very good moisture protection and low noise due to vacuum impregnation
- Contact protected on the circuit board thanks to covered solder pin strips
- Stable connection technology with injected round wire soldering pins
- Additional mounting option with holes in the core

Applications

Safety isolating transformer for the safe electrical isolation of the input and output sides. The transformer is suitable for creating SELV and PELV circuits because of the limit on the output voltage.

Sample application



Standards

Safety isolating transformer
to: VDE 0570 Part 2-6, DIN EN 61558-2-6, EN 61558-2-6, IEC 61558-2-6

Approvals





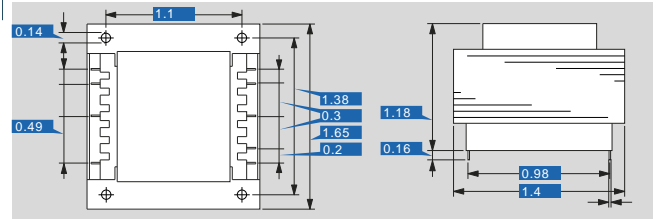
Safety isolating transformer

EP 4,5/15

Electrical data	
Type	EP 4,5/15
Input	
Rated input voltage	230 Vac
Rated frequency	50 - 60 Hz
Output	
Rated output voltage	2 x 15 Vac
Power	4.5 VA
No-load voltage (app. x factor)	1.51
No-load loss (typ.)	1.9 W
Efficiency	56 %
Standards	
Classification	Safety isolating transformer
Environment	
Ambient temperature max.	104.0 °F
Safety and protection	
Type	Open type
Insulation class	E
Protection index	IP 00
Safety class (prepared)	II
Short circuit strength	non-short-circuit proof
Overload protection	Typ PTC 890 (Accessory - available on request)
Order numbers	
Order Number	EP 4,5/15

Mechanical data	
Type	EP 4,5/15
Terminal and mounting	
Fixing method	Holes in the core package
Terminals	Pins for PCB
Measures and weights	
Core type	EI 42/14,8
Weight	0.35 lbs
Width	1.65 inch

Dimensions in inch



Subject to change.