

Safety isolating transformer

FLD 35/15



FLD 12/8

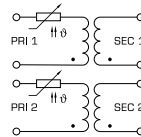
Advantages

| |
|---|
| Minimum size at high output |
| Low height |
| Integrated overload protection using PTC in the input |
| Double input voltage for series or parallel connection |
| Double output voltage for series or parallel connection |
| Permanent corrosion protection, high insulation value and maximum electrical reliability due to XtraDenseFill resin encapsulation |
| Self-extinguishing potting material Coil shell in 2-chamber technology |

Applications

As a safety isolating transformer for the safe electrical isolation of the input and output sides. The transformer is suitable for creating SELV and PELV circuits because of the limit on the output voltage.

Sample application



Standards

Safety isolating transformer
to: VDE 0570 Part 2-6, DIN EN 61558-2-6, EN 61558-2-6, IEC 61558-2-6

Approvals



VDE (EN 61347)

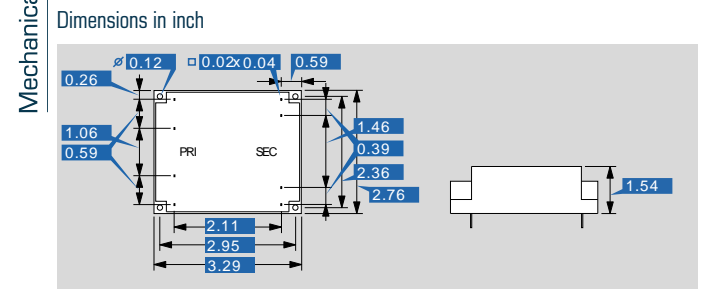


Safety isolating transformer

FLD 35/15

| Type | | FLD 35/15 |
|-------------------------|------------------------------------|------------------------------|
| Electrical data | Input | |
| | Rated input voltage | 2 x 115 Vac |
| | Rated frequency | 50 - 60 Hz |
| | Output | |
| | Rated output voltage | 2 x 15 Vac |
| | Power | 35 VA |
| | No-load voltage (app. x factor) | 1.20 |
| | No-load loss (typ.) | 3.2 W |
| | Efficiency | 78 % |
| | Standards | |
| | Classification | Safety isolating transformer |
| | Approvals | |
| | Approvals | VDE |
| | Environment | |
| | Ambient temperature max. | 104.0 °F |
| Safety and protection | | |
| Type | Encapsulated | |
| Insulation class | E | |
| Protection index | IP 00 | |
| Safety class (prepared) | II | |
| Short circuit strength | non-inherently short-circuit proof | |
| Order numbers | | |
| Order Number | FLD 35/15 | |

| Type | | FLD 35/15 |
|-----------------------|--|---------------------------------|
| Terminal and mounting | | |
| Terminals | | Pins for printed circuit boards |
| Measures and weights | | |
| Core type | | UI 48/17,0 |
| Weight | | 1.63 lbs |



Subject to change.