

Safety isolating transformer FLD 4/6



FLD 12/8

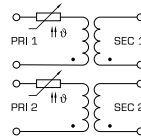
Advantages

Minimum size at high output
Low height
Integrated overload protection using PTC in the input
Double input voltage for series or parallel connection
Double output voltage for series or parallel connection
Permanent corrosion protection, high insulation value and maximum electrical reliability due to XtraDenseFill resin encapsulation
Self-extinguishing potting material Coil shell in 2-chamber technology

Applications

As a safety isolating transformer for the safe electrical isolation of the input and output sides. The transformer is suitable for creating SELV and PELV circuits because of the limit on the output voltage.

Sample application



Standards

Safety isolating transformer
to: VDE 0570 Part 2-6, DIN EN 61558-2-6, EN 61558-2-6, IEC 61558-2-6

Approvals



VDE (EN 61347)



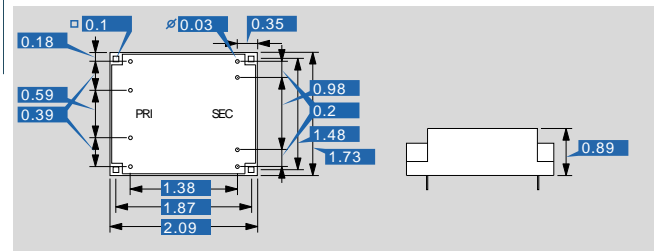
Safety isolating transformer

FLD 4/6

Electrical data		Type	FLD 4/6
Input			
Rated input voltage			2 x 115 Vac
Rated frequency			50 - 60 Hz
Output			
Rated output voltage			2 x 6 Vac
Power			4 VA
No-load voltage (app. x factor)			1.37
No-load loss (typ.)			0.8 W
Efficiency			70 %
Standards			
Classification			Safety isolating transformer
Approvals			
Approvals			VDE
Environment			
Ambient temperature max.			104.0 °F
Safety and protection			
Type			Encapsulated
Insulation class			E
Protection index			IP 00
Safety class (prepared)			II
Short circuit strength			non-inherently short-circuit proof
Order numbers			
Order Number			FLD 4/6

Mechanical data		Type	FLD 4/6
Terminal and mounting			
Terminals			Pins for printed circuit boards
Measures and weights			
Core type			UI 30/10,5
Weight			0.40 lbs

Dimensions in inch



Subject to change.