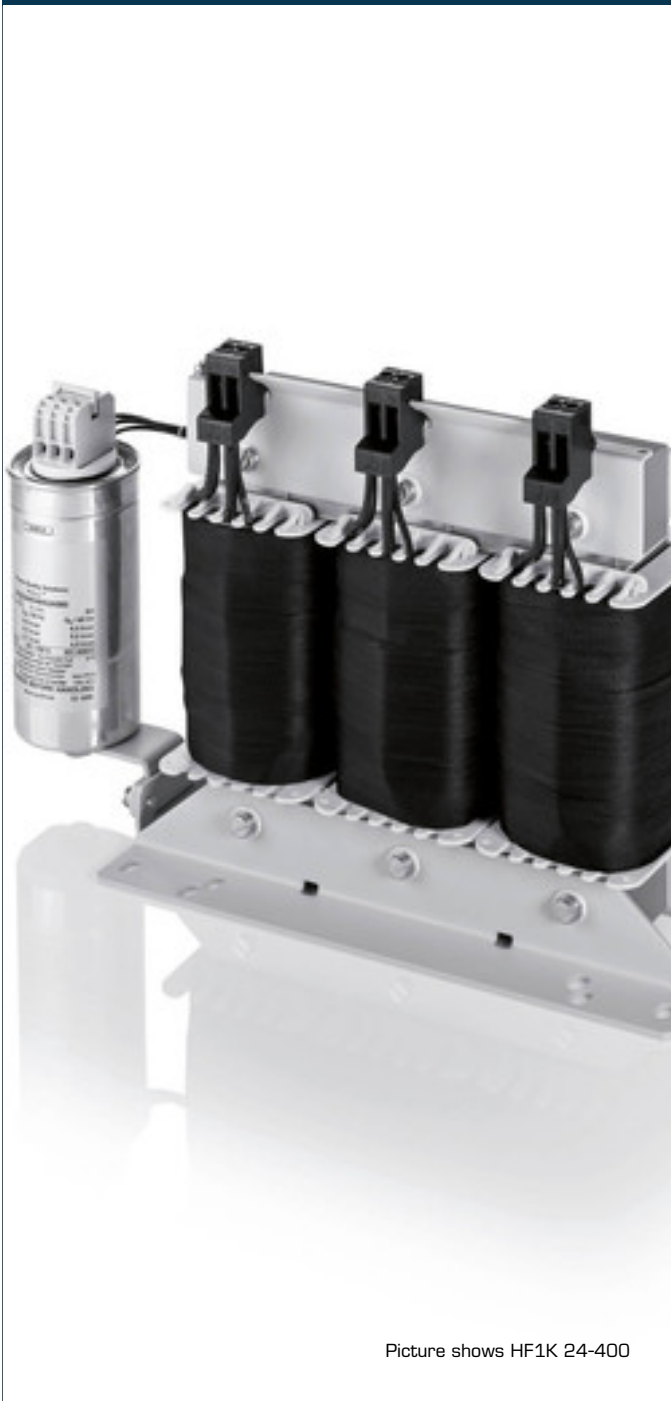


## Harmonic filter HF1K 50-400



Picture shows HF1K 24-400

### Advantages

Sinusoidal current consumption from the main in devices with uncontrolled B6U diode rectifiers
Compliance with EN 61000-3-2, EN 61000-3-12
Support in the compliance with IEEE 519, D-A-CH-CZ
Power factor >0,95 at rated current
Hardly any intermediate circuit voltage dip by comparison with a 4 % uK line reactor
Harmonic filter with minimum capacitive idle reactive power
Very good corrosion protection and low noise due to vacuum impregnation
Operation at 50 - 60 Hz possible
Use of the HF1K as a central hum filter for multiple converters possible

### Applications

Harmonic filter module to ensure sinusoidal main currents, reduction of main harmonic currents, increase in system service life and system reliability and compliance with power quality standards such as IEEE 519, TEC 61000-3-2, IEC 61000-3-12.

### Standards

Harmonic filter in accordance with  
EN 61558 Part 1, EN 61558 Part 20, UL 508 17th Ed., CSA 22.2 No. 14-10

### Approvals



UL 506, CSA 22.2

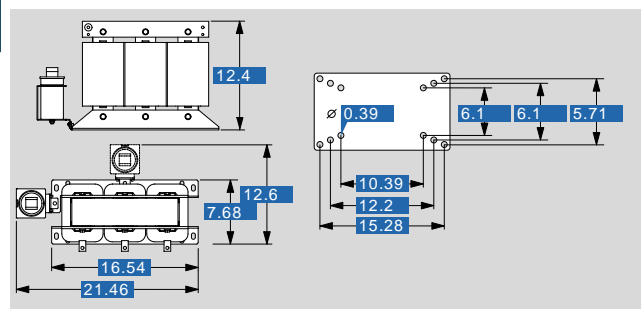


# Harmonic filter HF1K 50-400

Type		HF1K 50-400
<b>Electrical data</b>	<b>Operating data</b>	
	Rated voltage	3 x 400 Vac
	Voltage range	360-440 Vac
	Rated current	3 x 73 A
	THD-I	8 % (nominal load)
	Rated load power	60.35 HP
	Description of the load	Symmetrical loading by converters with B6U input rectifiers
	Overrating Capacity	150 % for 60 sec. every 10 min.
	Efficiency	99 %
	Power loss	412 W
	Capacitive idle power	10 kVar
	<b>Input</b>	
	Rated frequency	50 - 60 Hz
	<b>Approvals</b>	
	Approvals	cURus
	<b>Environment</b>	
	Ambient temperature	14 °F to 113 °F, without condensation
	Type of cooling	Air natural
MTBF @ 122 °F/500 V (MIL-HB-217F)	>500.000 h @ 40°C/400Vac	
<b>Safety and protection</b>		
Type	Open type	
Insulation class	H	
Protection index	IP 00	
Safety class	I	
<b>Notes</b>		
*	IE2 efficiencies of the motors and an efficiency >96 % assumed	
<b>Order numbers</b>		
<b>Order Number</b>	<b>HF1K 50-400</b>	

Type		HF1K 50-400
<b>Mechanical data</b>	<b>Terminal and mounting</b>	
	Terminals phase	Copper tab, M10 bolt
	Connection type	Bolt, M6
	Fixing method	Mounting lugs
<b>Measures and weights</b>		
Weight	166.45 lbs	

## Dimensions in inch



Subject to change.