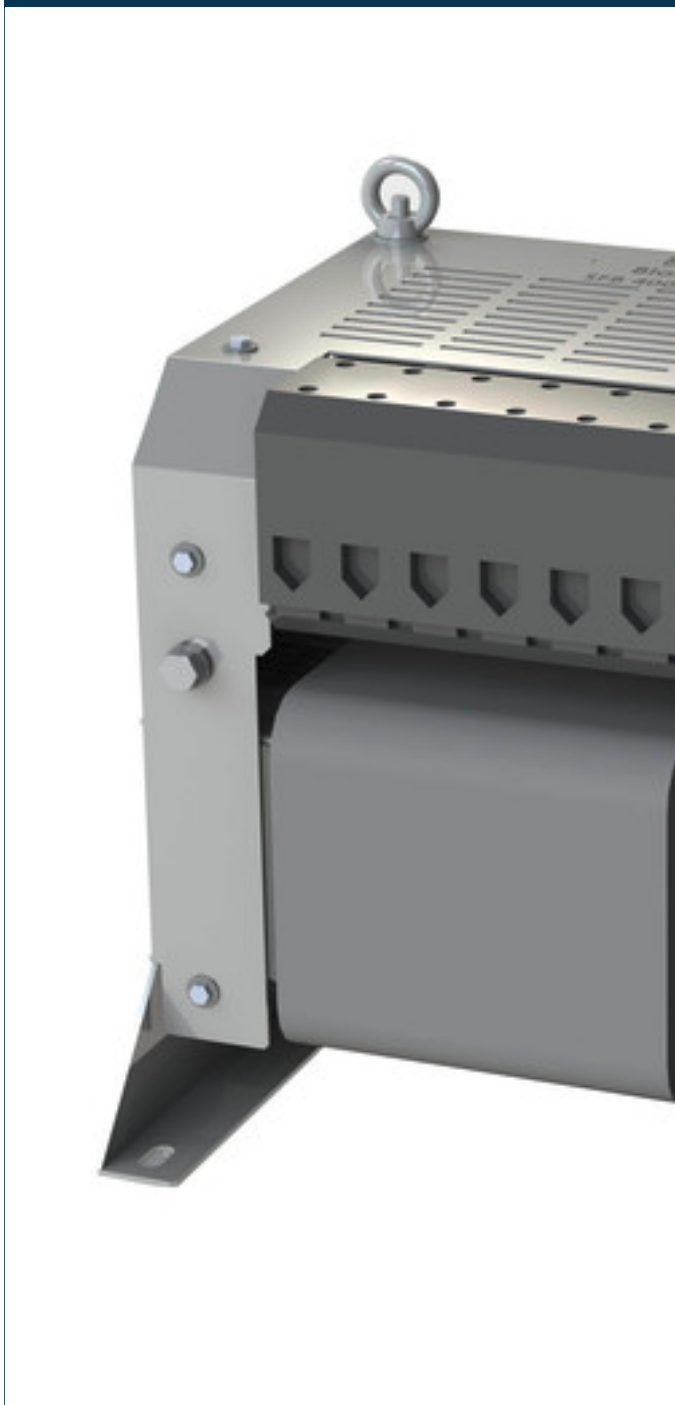


Sine filter  
**SFB 400/250**



## Advantages

Prevention of overvoltages on the motor
Long cable lengths possible
Reduction in motor noise
Reduction in line-borne and field-borne emitted interference
Reduction in motor losses
Very good corrosion protection and low noise due to vacuum impregnation

## Applications

Sine filter for the suppression of differential mode interference.

## Standards

Output filter with capacitor for frequency converters complying with  
DIN EN 61558-2-20, IEC 61558-2-20, UL 508, CSA 22.2 No. 14-9195

## Approvals



UL 508, CSA 22.2 No 14-9195

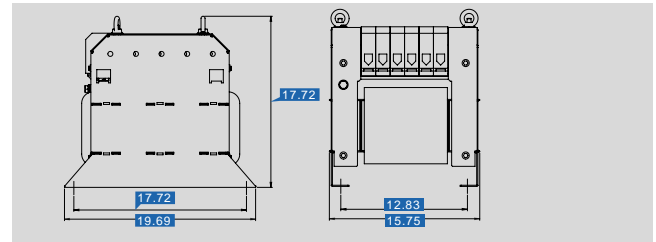


# Sine filter SFB 400/250

Type		SFB 400/250
Electrical data	Operating data	
	Rated voltage	max. 3 x 400 Vac
	Voltage range	0 - 520 Vac
	Voltage drop	7.5 % @ 400 Vac
	Rated current	250 A
	for motor rated output approx.	177.01 HP
	Rated frequency	0 - 60 Hz
	Switching frequency	4 - 8 kHz
	Approvals	
	Approvals	-
	Environment	
	Ambient temperature max.	104.0 °F
	Safety and protection	
	Type	Open type
Insulation class	H	
Protection index	IP 00	
Safety class (prepared)	I	
Test voltage	3000 Vac, 50 Hz	
Order numbers		
<b>Order Number</b>	<b>SFB 400/250</b>	

Type		SFB 400/250
Mechanical data	Terminal and mounting	
	Terminals phase	Screw clamp, 150 mm <sup>2</sup>
	Connection type	Bolt, M12
	Fixing method	Fixing rail
	Fixing screws	M10
Mounting position		only for vertical mounting
Measures and weights		
Weight	264.55 lbs	

## Dimensions in inch



Subject to change.