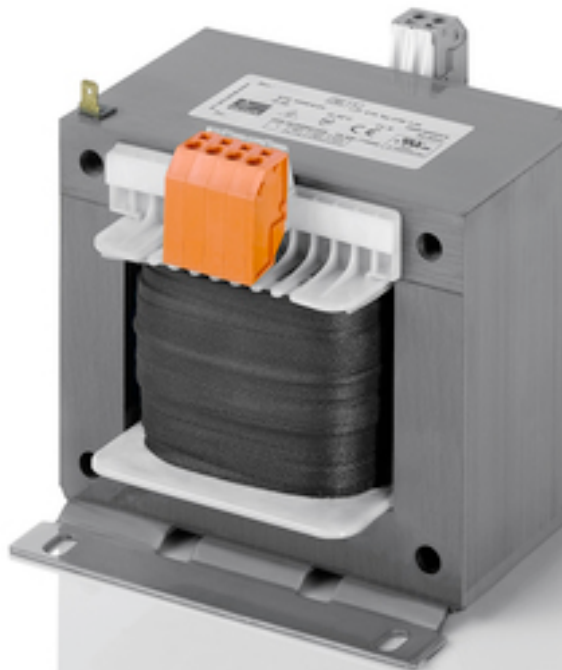


Control- and safety isolating transformer STE 500/4/24



Picture shows STE 1000/4/23

Advantages

Reduced inrush current
High power density due to a compact construction design
Primary side $\pm 5\%$ taps for voltage adjustment
Very good corrosion protection and low noise due to vacuum impregnation
Fast installation because of the use of cage-clamp terminals
Contact protected screw connection terminals complying with UVV BGV A3
Simple mounting due to robust metal footplate with oval slots
DIN rail clamp included up to 250 VA

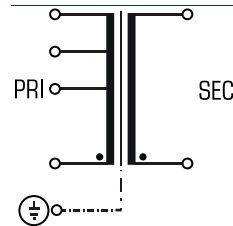
Applications

As a control transformer for the electrical isolation of the input and output sides. The construction of the transformer to supply control systems according to VDE 0113 is designed.

As an isolating transformer for the safe electrical isolation of the input and output sides. The transformer may be used to set up protective separation as a protective measure in accordance with VDE 0100.

As a safety isolating transformer for the safe electrical isolation of the input and output sides. The transformer is suitable for creating SELV and PELV circuits because of the limit on the output voltage.

Sample application



Standards

Control transformer

to: VDE 0570 Teil 2-2, DIN EN 61558-2-2, EN 61558-2-2, IEC 61558-2-2,
UL 5085-1/-2, CSA 22.2 No.66

Safety isolating transformer

to: VDE 0570 Teil 2-6, DIN EN 61558-2-6, EN 61558-2-6, IEC 61558-2-6, UL
5085-1/-2, CSA 22.2 No.66

Approvals



UL 5085-1/-2, CSA 22.2 No.66



Control- and safety isolating transformer

STE 500/4/24

Electrical data	
Type	
STE 500/4/24	
Input	
Rated input voltage	400 Vac
Tappings Input	±5 %
Rated frequency	50 - 60 Hz
Output	
Rated output voltage	24 Vac
Rated power VDE (DB cos phi=1)	500 VA
Rated power VDE (KB cos phi=0.5)	2.000 VA
No-load voltage (app. x factor)	1.05
Efficiency	93 %
Standards	
Classification	Control- and safety isolating transformer
Approvals	
Approvals	cURus
Environment	
Ambient temperature max.	104.0 °F
Type of cooling	self-cooling
Safety and protection	
Type	Open type
Insulation class	VDE=B, UL=class 130
Protection index	IP 00
Safety class (prepared)	I
Short circuit strength	non-short-circuit proof
PRI Fusing recommendation by circuit breaker with tripping characteristic type 20 x I rated related to set)	
Setting range	1.00 - 1.60 A
Setting value	1.4 A
Order numbers	
Order Number	STE 500/4/24

Mechanical data	
Type	
STE 500/4/24	
Terminal and mounting	
Fixing method	Base plate
Fixing screws	M5
Terminals	Spring clamp terminal, PE 6.3 x 0.8
Measures and weights	
Weight	14.33 lbs

