

Safety isolating transformer VR 22/2/12



Picture shows VR 7,5/2/9

Advantages

Minimum size at high output

Also with double output voltage for series or parallel connection

Permanent corrosion protection, high insulation value and maximum electrical reliability due to XtraDenseFill resin encapsulation

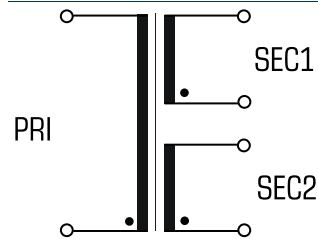
Self-extinguishing potting material

Space saving installation due to additional screw mounting in the base plate

Applications

Safety transformer for the safe electrical isolation of the input and output sides. The transformer is suitable for creating SELV and PELV circuits because of the limit on the output voltage.

Sample application



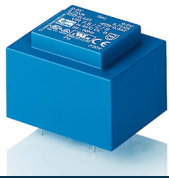
Standards

Safety isolating transformer
to: VDE 0570 Part 2-6, DIN EN 61558-2-6, EN 61558-2-6, IEC 61558-2-6,
UL 5085-1/-2, CSA 22.2 No.66

Approvals



VDE, UL 5085-1/-2, CSA 22.2 No.66

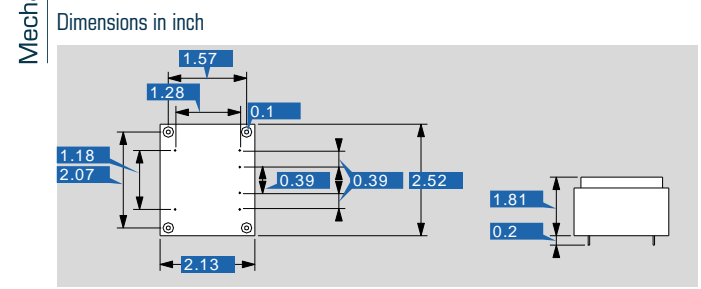


Safety isolating transformer

VR 22/2/12

| Type | | VR 22/2/12 |
|-------------------------|---------------------------------|------------------------------|
| Electrical data | Input | |
| | Rated input voltage | 230 Vac |
| | Rated frequency | 50 - 60 Hz |
| | Output | |
| | Rated output voltage | 2 x 12 Vac |
| | Power | 22 VA |
| | No-load voltage (app. x factor) | 1.15 |
| | No-load loss (typ.) | 2.4 W |
| | Efficiency | 80 % |
| | Standards | |
| | Classification | Safety isolating transformer |
| | Approvals | |
| | Approvals | cURus, VDE |
| | Environment | |
| | Ambient temperature max. | 104.0 °F |
| Safety and protection | | |
| Type | Encapsulated | |
| Insulation class | VDE=B, UL=class 105 | |
| Protection index | IP 00 | |
| Safety class (prepared) | II | |
| Short circuit strength | non-short-circuit proof | |
| Order numbers | | |
| Order Number | VR 22/2/12 | |

| Type | | VR 22/2/12 |
|-----------------------|---------------|--|
| Terminal and mounting | Fixing method | Additional fixing by self-tapping screws |
| | Terminals | Pins for PCB |
| Measures and weights | Pin (ø) | 0.031 inch |
| | Core type | EI 60/21 |
| | Weight | 1.26 lbs |



Subject to change.