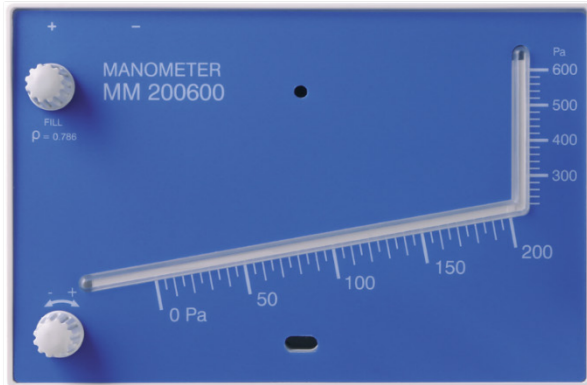


Datasheet

Subject to technical alteration
Issue date: 14.08.2020 · A110



» APPLICATION

Differential pressure inclined tube manometers for monitoring differential pressure of air and other non-flammable and non-aggressive gases. Possible applications: Monitoring of air filters and fans, monitoring of industrial air cycles and duct airflow.

» TYPES AVAILABLE

| Type | Measuring range | Accuracy | Gauge fluid |
|-------|-----------------|---------------|-------------|
| MM50 | -50..+50 Pa | ±1 Pa | red |
| MM100 | -20..+100 Pa | ±1 Pa | red |
| MM500 | -100..+500 Pa | ±5 Pa / 25 Pa | red |
| MM600 | 0..+600 Pa | ±5 Pa / 25 Pa | red |

» SECURITY ADVICE – CAUTION



The installation and assembly of the device should only be performed by authorized personnel.

The product should only be used for the intended application. Unauthorised modifications are prohibited! The product must not be used in relation with any equipment that in case of a failure may threaten, directly or indirectly, human health or life or result in danger to human beings, animals or assets. Ensure all power is disconnected before installing. Do not connect to live/operating equipment.

Please comply with

- Local laws, health & safety regulations, technical standards and regulations
- Condition of the device at the time of installation, to ensure safe installation
- This data sheet and installation manual

» PRODUCT TESTING AND CERTIFICATION



Declaration of conformity

The declaration of conformity of the products can be found on our website <https://www.thermokon.de/>.

» NOTES ON DISPOSAL



As a component of a large-scale fixed installation, Thermokon products are intended to be used permanently as part of a building or a structure at a pre-defined and dedicated location, hence the Waste Electrical and Electronic Act (WEEE) is not applicable. However, most of the products may contain valuable materials that should be recycled and not disposed of as domestic waste. Please note the relevant regulations for local disposal.

» TECHNICAL DATA

| | |
|---------------------------|--|
| Measuring values | differential pressure |
| Medium | air, non-aggressive gases, non-flammable gases |
| Working range temp. | -40..+60 °C |
| Measuring range pressure | MM50: -50..+50 Pa MM100: -20..+100 Pa MM500: -100..+500 Pa MM600: 0..+600 Pa |
| Accuracy pressure | MM50 100: ±1 Pa MM500: ±5 Pa (-100..0 Pa) ±25 Pa (0..+500 Pa) MM600: ±5 Pa (0..+200 Pa) ±25 Pa (+200..+600 Pa) |
| Max. working overpressure | 200 kPa |
| Enclosure | ABS, cover PMMA |
| Protection | IP54 according to EN 60529 |
| Connection mechanical | connection tube PVC, soft |
| Delivery contents | 2 mounting screw, 2 plastic duct flanges, 2 m PVC connection tube soft, Ø=4/7 mm, 30 ml gauge fluid, 2 indication stickers (red/green) |

» MOUNTING ADVICES

The device must be mounted balanced with the self-drilling screws herewith enclosed.

Turn back the zero button to the stop position. Then turn one rotation clockwise, so that the adjustment can be conducted in both directions. Screw-off the filling button and fill with gauge fluid until the fluid is visible close to the zero-point on the scale. Make an exact adjustment with the zero button and screw-on the filling button.

Establish a connection between the connector (-) of the measuring device with the flow-off side of the filter as well as the connector (+) of the measuring device with the flow-on side of the filter. To mark the start (green) and endpressure (red), bond the green and red adhesive label side by side upon the scale. Please pay attention to the recommendation of the equipment manufacturer regarding the recommended pressure loss values.

Check the oil level at regular intervals and readjust the zero button if necessary. Before the readjustment, please make sure that the device is unpressurized. Therefore the tube must be at first pulled off on the upside of the device. Fill up with oil if necessary.

» COMMISSIONING

A prerequisite for the operation is a proper installation of all electrical supply control and sensing leads as well as the pressurized connection line. Before installing the device, the leak tightness of the pressurized connection lines has to be inspected.

» DIMENSIONS (MM)

